

A NEW DAY IN COURT

UNIVERSITY OF ARIZONA JAMES E. ROGERS COLLEGE OF LAW COURTROOM & LOBBY RECONSTRUCTION



THE UNIVERSITY OF ARIZONA
James E. Rogers
College of Law

TABLE OF CONTENTS

PROJECT OVERVIEW	1
DESIGN CONCEPTS	2
FLOOR PLAN	3
RENDERINGS	4–7
INTERIOR DESIGN HIGHLIGHTS	8
STRUCTURAL HIGHLIGHTS	8
PROJECT COST ESTIMATE SUMMARY	9
STEERING COMMITTEE	9

PROJECT OVERVIEW

The University of Arizona James E. Rogers College of Law has an exciting opportunity to expand and further support our Advocacy program through the construction of two new state-of-the-art courtrooms. The new courtrooms will not only be highly functional, but will enhance our students' education by creating a heightened courtroom experience. This project is intended to reach beyond the students to the professional community at large, bringing people together to experience the multifaceted layers of the law.

A facility of this quality will attract the highest caliber students and contend with the top law schools in the country. It will represent the College of Law's mission of a supportive community, forward-looking approach, and diversity of perspectives.

The design will be uniquely suited for the College of Law, distinguishing the University of Arizona from peer institutions. The new space places the courtrooms as the visual heart of the building and will create a hub of activity, enhancing the overall law school experience.



A University of Arizona Law student participates in a mock trial in a downtown Tucson courtroom.

DESIGN CONCEPTS

The Courtroom & Lobby Reconstruction will create modern, professional, realistic courtroom spaces that will be central to the life of the college and the student experience. Modern technology will be integrated throughout each space, improving the in-person experience and allowing easy connectivity for remote participants.

The remodel includes:

NEW KEVIN R. BOYLE COURTROOM

- ▶ Combining existing Classroom 118 and Jury Courtroom 126 into a single Courtroom
- ▶ A glass partition will make courtroom activities visible to all

NEW COURTROOM/CLASSROOM

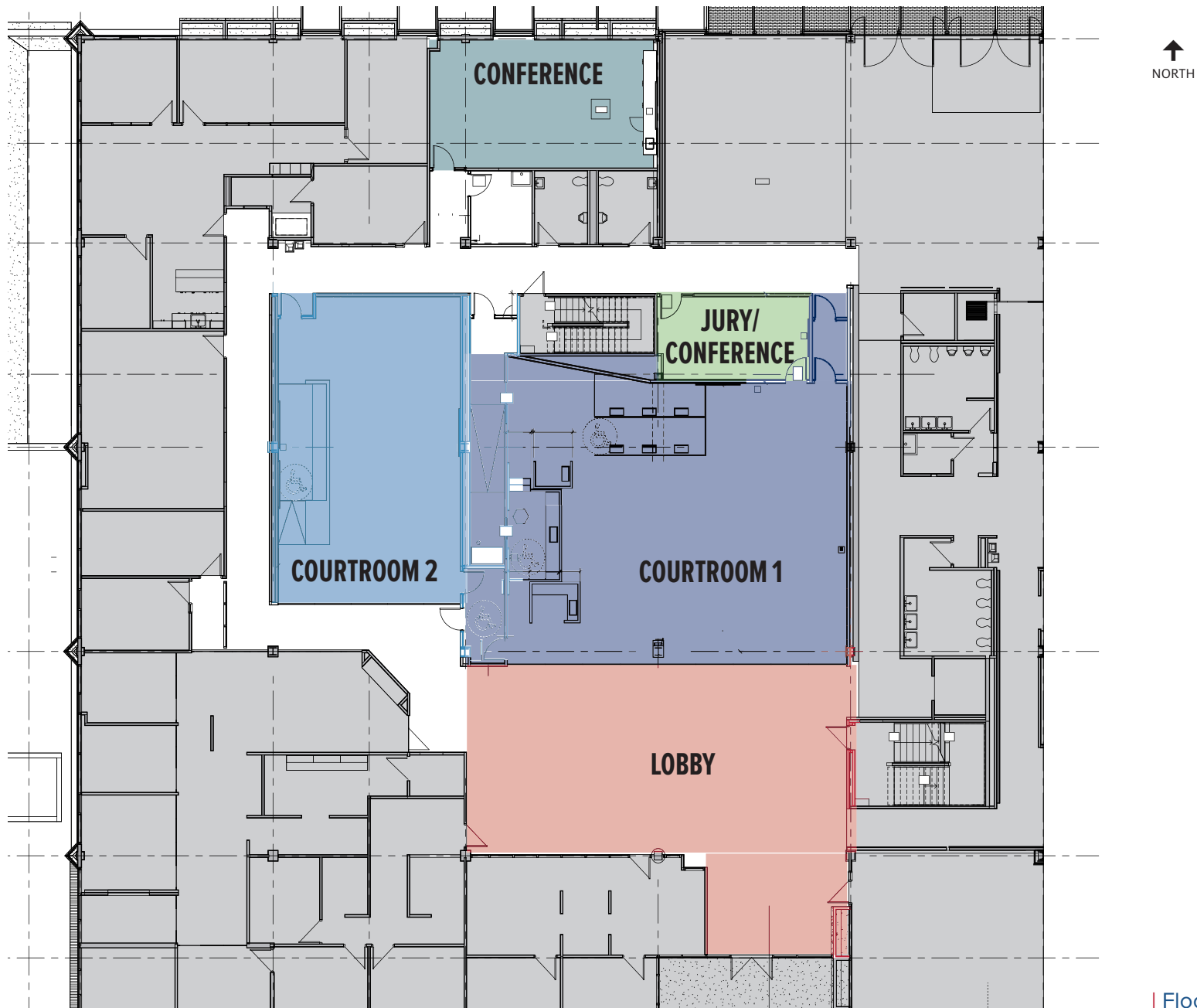
- ▶ Reconstructing the existing Appellate Courtroom 146 to create a flexible, dual-purpose Courtroom and classroom
- ▶ A glass partition will make courtroom activities visible to all

NEW CONFERENCE ROOMS

- ▶ Constructing two new conference rooms, one that will also serve as a jury deliberation room

UPDATED SCHMIDT, SETHI & AKMAJIAN LOBBY

- ▶ Remodeling the lobby space adjacent to the courtrooms
- ▶ Upgrades include view of courtroom activities, new study spaces, enhanced audiovisual capabilities



| Floorplan



View 1 | Kevin R. Boyle Courtroom



View 2 | Jury and Conference Room



View 3 | Courtroom/Classroom



View 4 | Schmidt, Sethi & Akmajian Lobby

INTERIOR DESIGN HIGHLIGHTS

The reconstructed courtrooms and lobby will feature modern elements, integrated technology and flexible furniture to create visually striking, yet highly functional spaces.

In the Kevin R. Boyle Courtroom, a glass partition provides visibility from the south to allow viewing of courtroom activities. The space includes gallery seating for 50, a 12-seat jury box, witness stand, defendant's and plaintiff's/prosecutor's tables, and a Jury Room that can also serve as a conference/study room. An elevated judge's bench creates a realistic courtroom setting.

A glass partition also provides visibility from the south to allow viewing of courtroom activities in the Courtroom/Classroom, which will feature flexible tables that can be reconfigured for a classroom. A raised judges' bench which can accommodate a 5-seat Appellate Judicial Panel and dual projection screens provide maximum visibility. There will be a viewing gallery with seating for 36.

STRUCTURAL HIGHLIGHTS

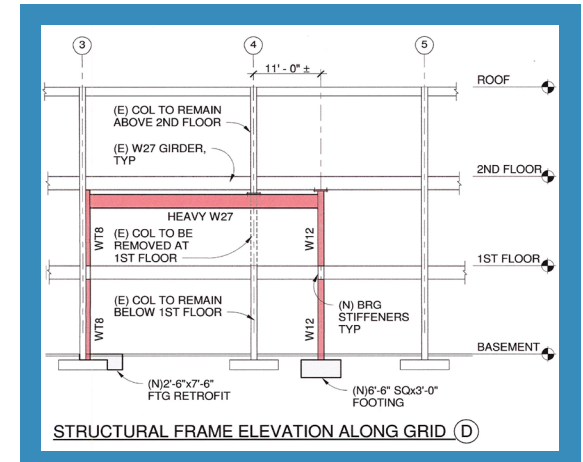
KEVIN R. BOYLE COURTROOM STRUCTURAL RETROFIT

In order to provide a column-free open courtroom, an existing column must be removed on the second level. The column is supporting roof and one level of floor loads. In addition to the gravity loads, the column is a moment frame column acting in both east-west and north-south directions.

Transfer Girder Retrofit

The column removal requires the installation of a new transfer girder that will span to a new column location at the edge of the courtroom. The new column will occur for two levels, requiring a new foundation at the basement level.

Removing the column will require the installation of a single transfer girder directly below the existing girder and column. This will require shoring the structure on each side of the column from basement level to the roof in order to remove the column and install the new girder.



Potential transfer girder retrofit solution

Lateral Load System Retrofit

Because the column to be removed is a component of the moment frame system, a comprehensive lateral load analysis will be required to study the effects on building drift and load redistribution. It is anticipated that a structural retrofit of the moment frames will be required by strengthening columns and girders in the adjacent bays to the removed column. This in-depth analysis is beyond the scope of this study and should be implemented in the next phase of the project.



PROJECT COST ESTIMATE SUMMARY

CONSTRUCTION COST ESTIMATES + SOFT COSTS (PROFESSIONAL FEES, FF&E, ETC.)

- ▶ Total \$4,000,000

For more information about the project, including donor naming and recognition opportunities, contact Megan O’Leary at moleary@arizona.edu or 520-621-8430.

STEERING COMMITTEE

- ▶ Sean Aiken — JD Student, College of Law
- ▶ Barbara Bergman — Professor of Law and Director of Advocacy, College of Law
- ▶ Brian Brandis — Architect, Project Manager, UA Planning, Design & Construction
- ▶ Brian Chase — Alumnus and Professor of Practice, College of Law
- ▶ DPR Construction — Contractor
- ▶ Gould Evans — Architect
- ▶ Karen Kowalski — Associate Dean, College of Law
- ▶ Tom Mauet — Professor of Law, College of Law
- ▶ Marc L. Miller — Dean, College of Law
- ▶ Megan O’Leary — Senior Director of Development, College of Law
- ▶ Vince Redhouse — Alumnus, College of Law
- ▶ Susie Salmon — Director of Legal Writing and Clinical Professor of Law, College of Law
- ▶ Ted Schmidt — Alumnus and Professor of Practice, College of Law
- ▶ Michael Wagenheim — Assistant Dean of Information Technology & Online Learning, College of Law
- ▶ Bernadette Wilkinson — Building Manager, College of Law



THE UNIVERSITY OF ARIZONA
James E. Rogers
College of Law

520-621-8430
law.arizona.edu/court